



Karndean
Designflooring
Commercial

Sportatorium

Hospitality
and Leisure

The Challenge

Mike "Smitty" Smith is the owner, president and general contractor at Smitty's Floors in Steubenville, Ohio. When the Catholic Community Center located next door to Smitty's warehouse was in desperate need of repair, Smith acquired the space with the intention of restoring the local landmark. Originally built in 1873, the goal was to update the community center to be a suitable gymnasium for youth wrestling matches, basketball games and other athletic activities, transforming it into the "Sportatorium" he had long envisioned.

Among the changes to the community center were filling in the pool to use as a storage room for his retail store, transforming the former ballroom into a wrestling and weight room, and updating a studio into a group fitness classroom. When the time came to update the basketball court, added to the community center in 1915, Smith considered refinishing the existing ¾" hardwood floors in the space; but as a Karndean Designflooring retailer, he saw an opportunity to provide a more durable and hygienic floorcovering. "We sell a lot of Karndean in the store and feel it's the top vinyl product in the industry," Smith said.



Sector: Hospitality and Leisure

Retailer: Smitty's Floors

Area: 6,000 sq.ft.

Location: Steubenville, OH



Macrocapra VGW50T



Red V6



Black V9



The Solution

Given the install environment, and the look of the original flooring, Smith wanted to find a wood visual that stayed true to that of a typical basketball court – a light to mid neutral brown. Smith decided Macrocapra VGW50T from the Van Gogh gluedown range would be the perfect fit. With a 20mil wear layer and ash blonde tone, the planks have a traditional look in a format durable enough to withstand foot traffic. With planks sized 48" x 7", Macrocapra is faster and easier to install than traditional hardwood planks.

As Smith planned the court, he worked closely with his Karndean Retail Business Manager and Karndean Customer Service and Technical departments to discuss options for lining and zoning the court, as part of the **Designflooring Services** consultative program. Rather than placing tape on top of the product, Smith opted to include custom Black and Red Karndean solid products into the court's design. Solid colors are available as a custom order, offering designers the ability to tailor products to fit the needs of the built environment and project.

The Results

Each plank features a 20mil wear layer and is finished with K-Guard+® surface protection for a hygienic and durable finish that can withstand the rigors of frequent athletic play. Unlike hardwood, Karndean luxury vinyl does not need to be stripped, sanded and waxed to maintain its look. All that is required is a pH neutral cleaner approved for use with vinyl flooring.

“Love the floor. It will look new for a long time,” Smith said. In the future, Smith hopes to add more basketball and volleyball games to the Sportatorium’s schedule to further utilize the court.

Product used: ■ Macrocapra VGW50T

Solid colors: Red **V6** | Black **V9**





Products Specified:



Van Gogh

| | Standard | Result |
|--|-------------------------------|---|
| Size | ASTM F2421 | 48" x 7" (1219 mm x 178 mm) |
| Thickness | ASTM F386 | 3.0 mm |
| Wear layer | ASTM F410 | 20 mil (0.50 mm) |
| Warranty* | Commercial Residential | 15 years Lifetime |
| Beveled edge | | Micro |
| Slip resistance** | ASTM D2047 | Pass (Dry 0.89) |
| Acoustic impact noise reduction | ASTM E2179-09 ASTM E492-09 | Δ IIC = 6 dB IIC = 46 dB (6" slab w/drop ceiling) IIC = 71 dB (6" slab w/drop ceiling + QuietChoice) |

* Subject to terms.

** Slip resistance is measured on freestanding ex-factory product. Slip resistance can be affected by many factors including but not limited to: product installation and underlayment, surface contamination, use, wear and how the product is maintained. Textural variation along the surface of the product can affect nominal values.



Solid colors

| | Standard | Result |
|---------------------|-----------|------------------|
| Thickness | ASTM F386 | 3.0 mm |
| Wear layer | ASTM F410 | 20 mil (0.50 mm) |
| Beveled edge | | None |



Macrocapra VGW50T

Technical Information

To view the full technical specification for each of our product ranges visit our website:

karndean.com/commercial-flooring/technical-data-sheets



Feeling Inspired?

We have a variety of tools available to help you achieve the look you desire for your project:



Designflooring Services

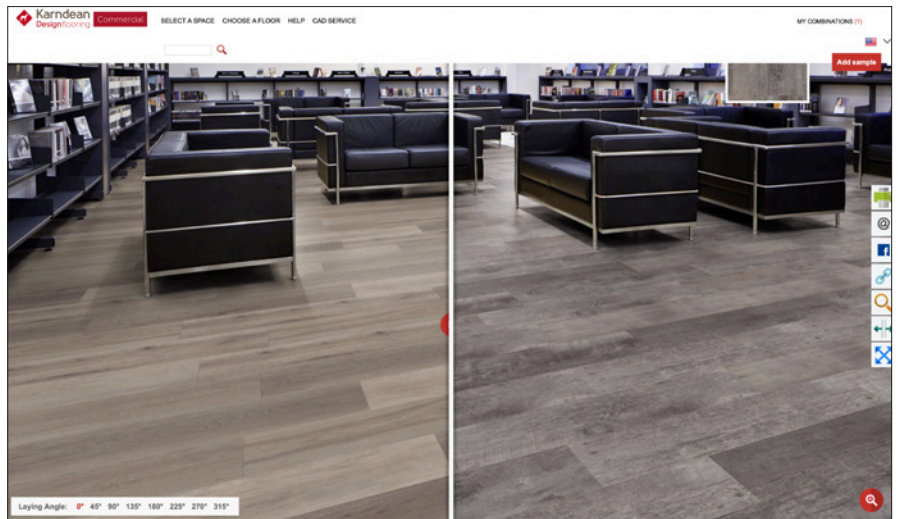
Our team of designers is here to help you navigate the infinite possibilities of Karndean Designflooring and personalize a space to fit your needs. Collaborate with Designflooring Services on installation design, flooring recommendations, and using your own designs and project files to bring your vision to life and create a captivating space.

karndean.com/designflooringservices

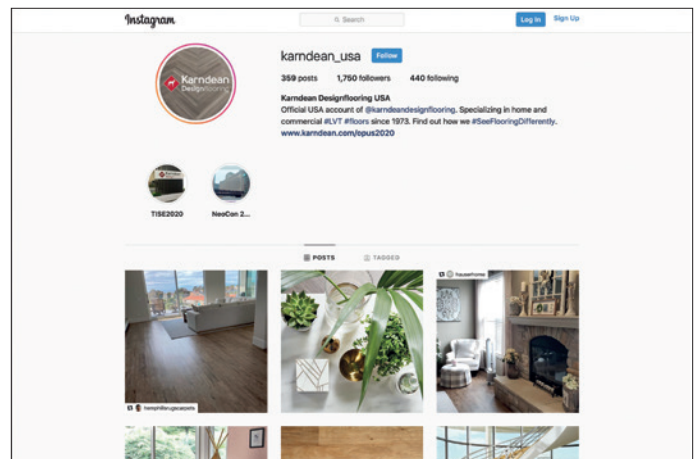
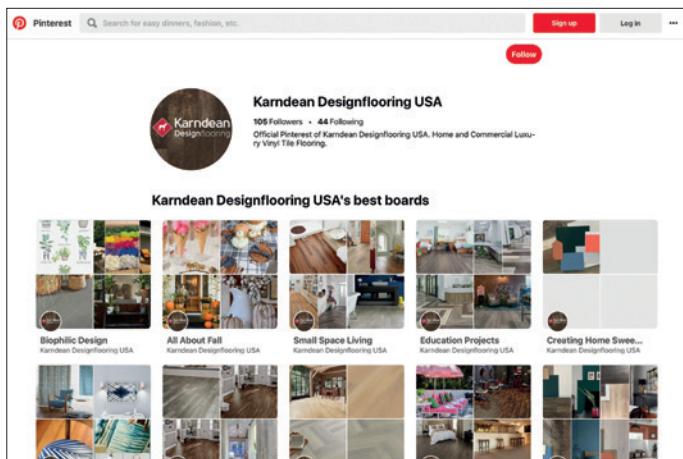
Floorstyle Floor Designer


Once you've narrowed down your color choices, use our free interactive design tool to upload a photo of your project and experiment with lay patterns, download CAD files and request samples.


karndean.com/commercialfloorstyle



Keep Up To Date With Us:



 Follow our boards on Pinterest
[karndeandesignflooringUSA](https://www.pinterest.com/karndeandesignflooringUSA)

 Follow us on Instagram
[karndean_usa](https://www.instagram.com/karndean_usa)



Karndean
Designflooring

Commercial