



Karndean
Designflooring



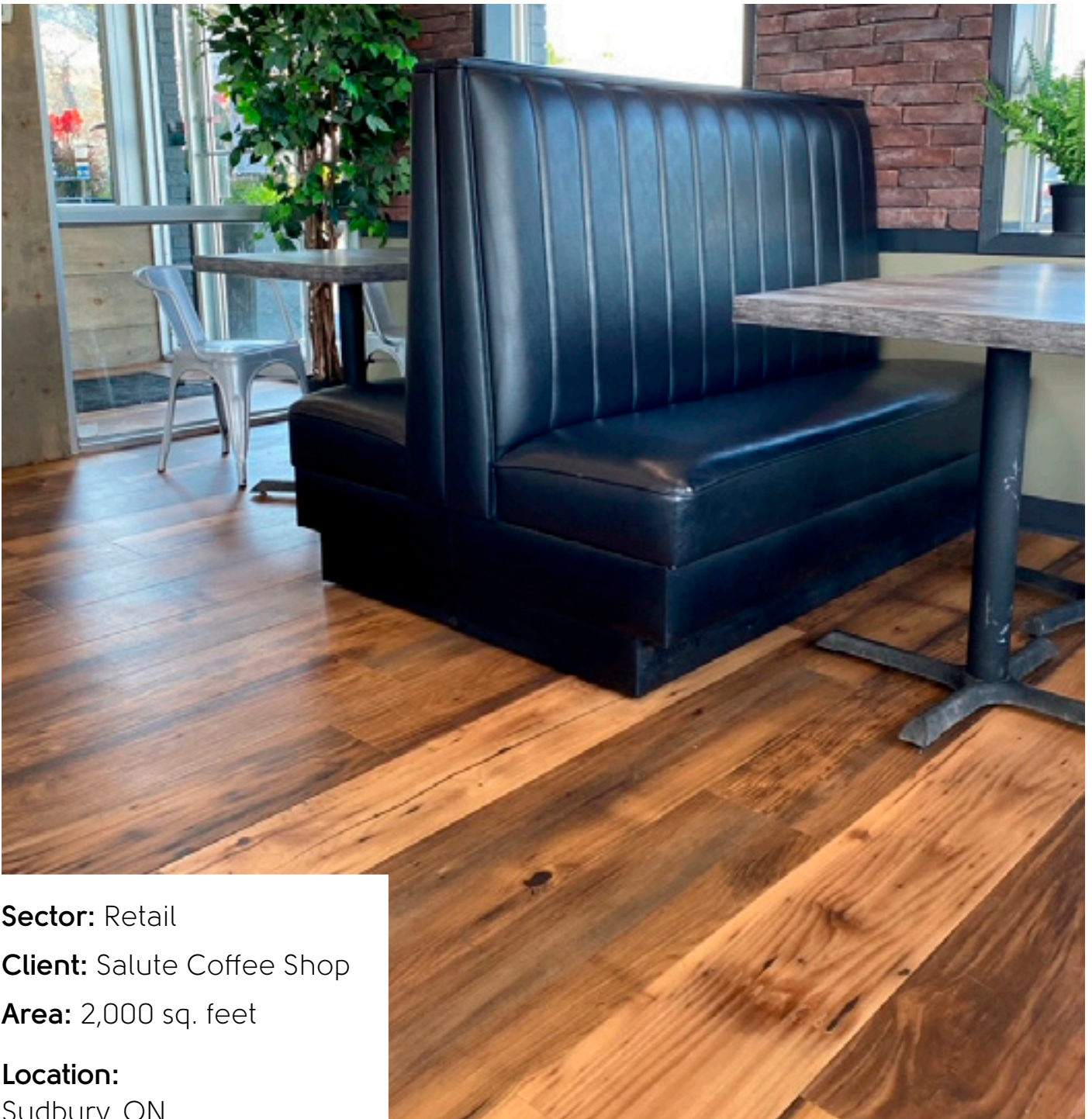
Salute Coffee Shop

| Retail

The brief

Located in Sudbury, Ontario, Salute Coffee Shop is a premium, locally owned coffee shop that ensures the best quality food and service during your visit.

When looking for a new floorcovering for their space, Salute Coffee Shop turned to Karndean Designflooring for a premium product that reflects their premier experience: "Although it is often more profitable to be a drive-through only, we always knew we wanted this to be a gathering place. What we love is that people prefer to come in rather than go through our drive-through and we believe that is because of our people and our design."



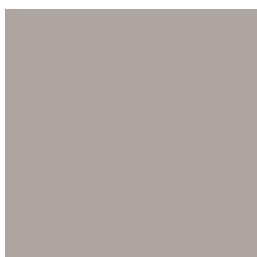
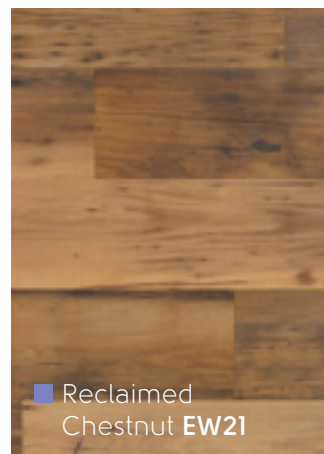
Sector: Retail

Client: Salute Coffee Shop

Area: 2,000 sq. feet

Location:

Sudbury, ON



The concept

It was imperative that the Salute Coffee Shop team was able to get a product quickly, while working on a short timeline, that also aligned with the look they were trying to achieve: "Karndean is a high quality product, with great service. This was an 8 week turnaround time, but their team is responsive and 'on it'. Michelle, who is our local Karndean Representative, jumped on a virtual call with me and we quickly narrowed down the design and found the perfect fit for our space. Karndean Designflooring offers a wide variety of visuals to choose from, there were so many designs I hadn't seen in LVT before. With such a wide variety of visuals to select from, I knew I would find the right match for this project with Karndean." – Salute Coffee Shop

The look

The team at Salute Coffee Shop decided on Karndean Art Select EW21 Reclaimed Chestnut, and Heavy Duty Commercial tile T203 to achieve their look: “We decided we wanted to go for casual with a hint of industrial; we wanted it to be comfortable and upscale.” – Salute Coffee Shop.

“We chose Reclaimed Chestnut because of how realistic this product looks, with the bevelled edge and variation between planks. The flooring was something we could change and have a big impact, and we wanted it to have a lot of character.” – Salute Coffee Shop.

Products used: ■ Reclaimed Chestnut **EW21** | **T203**





Products Specified:



Art Select

	Standard	Result
Size		56" x 9" (1422.4 mm x 228.6 mm)
Thickness		3.0 mm
Wear layer		30 mil (0.7 mm)
Warranty*	Commercial Residential	20 years Lifetime
Beveled edge		Standard
Slip resistance**	ASTM D2047	Pass (Dry >0.92)
Acoustic impact noise reduction	ASTM E2179-09 ASTM E492-09	Δ IIC = 6 dB IIC = 46 dB (6" Concrete Slab w/Drop Ceiling) IIC = 71 dB (6" slab w/drop ceiling+QuietChoice)

* Subject to terms.

** Slip resistance is measured on freestanding ex-factory product. Slip resistance can be affected by many factors including but not limited to: product installation and underlayment, surface contamination, use, wear and how the product is maintained. Textural variation along the surface of the product can affect nominal values.



■ Reclaimed Chestnut EW21

Technical Information

To view the full technical specification for each of our product ranges visit our website:

karndean.com/commercialtechdata



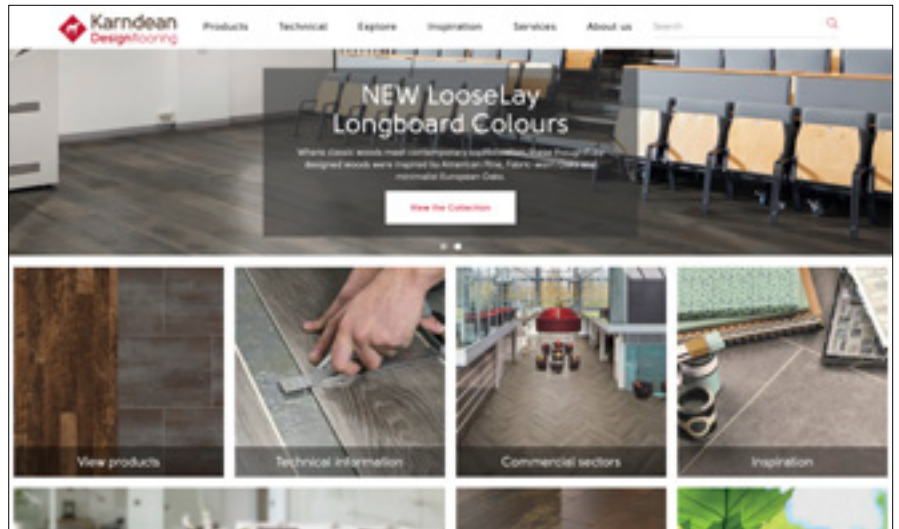
Feeling inspired?

We have a variety of tools available to help you achieve the look you desire for your project:

Commercial website

Our dedicated commercial website is the best resource to finding more information about our products, installation instructions and commercial services available to you.

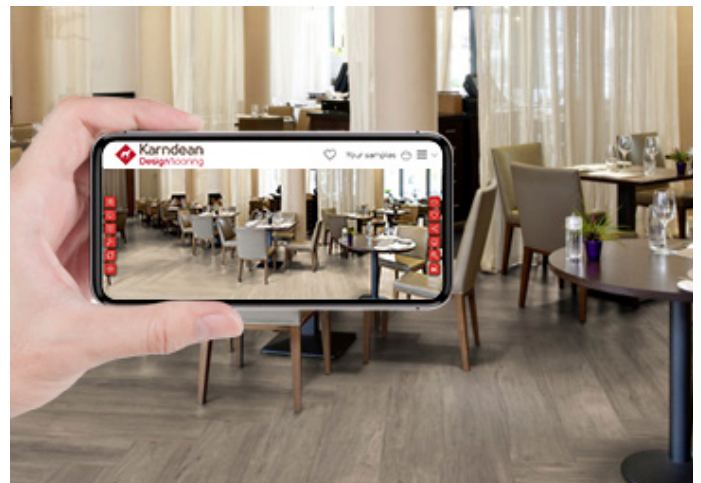
karndean.com/commercial



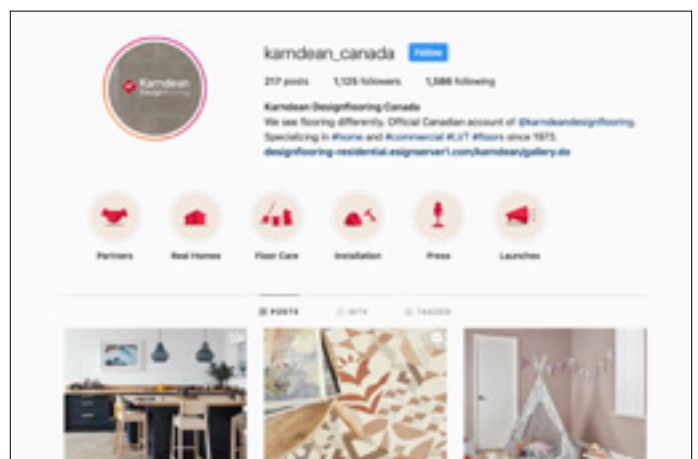
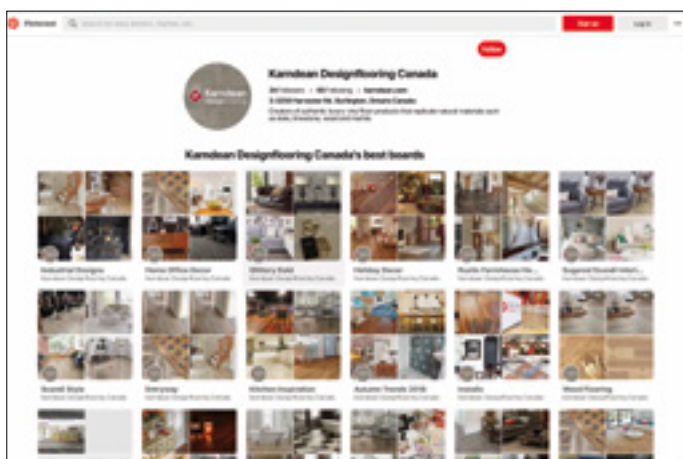
Commercial floorstyle

Check out our interactive room viewer, Floorstyle. Play around with different floor designs, laying patterns and design features using either our examples of typical commercial settings or upload a photo of a project you're currently working on to choose a floor to suit.

karndean.com/commercialfloorstyle



Keep up to date with us:



 Follow our boards on Pinterest [karndeanCAN](https://www.pinterest.com/karndeanCAN)

 Follow us on Instagram [karndean_canada](https://www.instagram.com/karndean_canada)